



Your Career Path Begins Here

LEARN MORE . EARN HIGH

ASPIRE

IT ACADEMY

Inner space ,SRM Road, Near Nirmala Shishu Bavan,
Kaloor, Ernakulam, Kerala 682018

Who are we?

Formed by IT Industry veterans with decades of Industry experience,

Aspire IT academy aims to create a generation of students with skills that are coveted in the software Industry.

Our Skilled Experienced Trainers will provide you practical knowledge classes with Real Time Projects, Interview question and answers, project case studies and many more to make you technical expert.

What we do?

The IT Industry account for nearly 70 per cent of campus recruitment in South India, but there is a huge disconnect between what this industry wants and what the universities train the students for.

We attempt to eliminate this gap. We offer courses that are specifically designed for not just getting a job, but for excelling in IT industry. Apart from the technical training, we also provide courses on communication skills and offer placement counselling





The Course curriculum is designed considering key and emerging technologies and is advised by Industry Experts. The course enable Raw Fresher's to be industry ready.

TRAINING

- Industry Oriented Training
- Live Classroom Sessions
- Online Tests & Mock Tests
- Mentorship Programmes
- Hands on Projects

PLACEMENTS

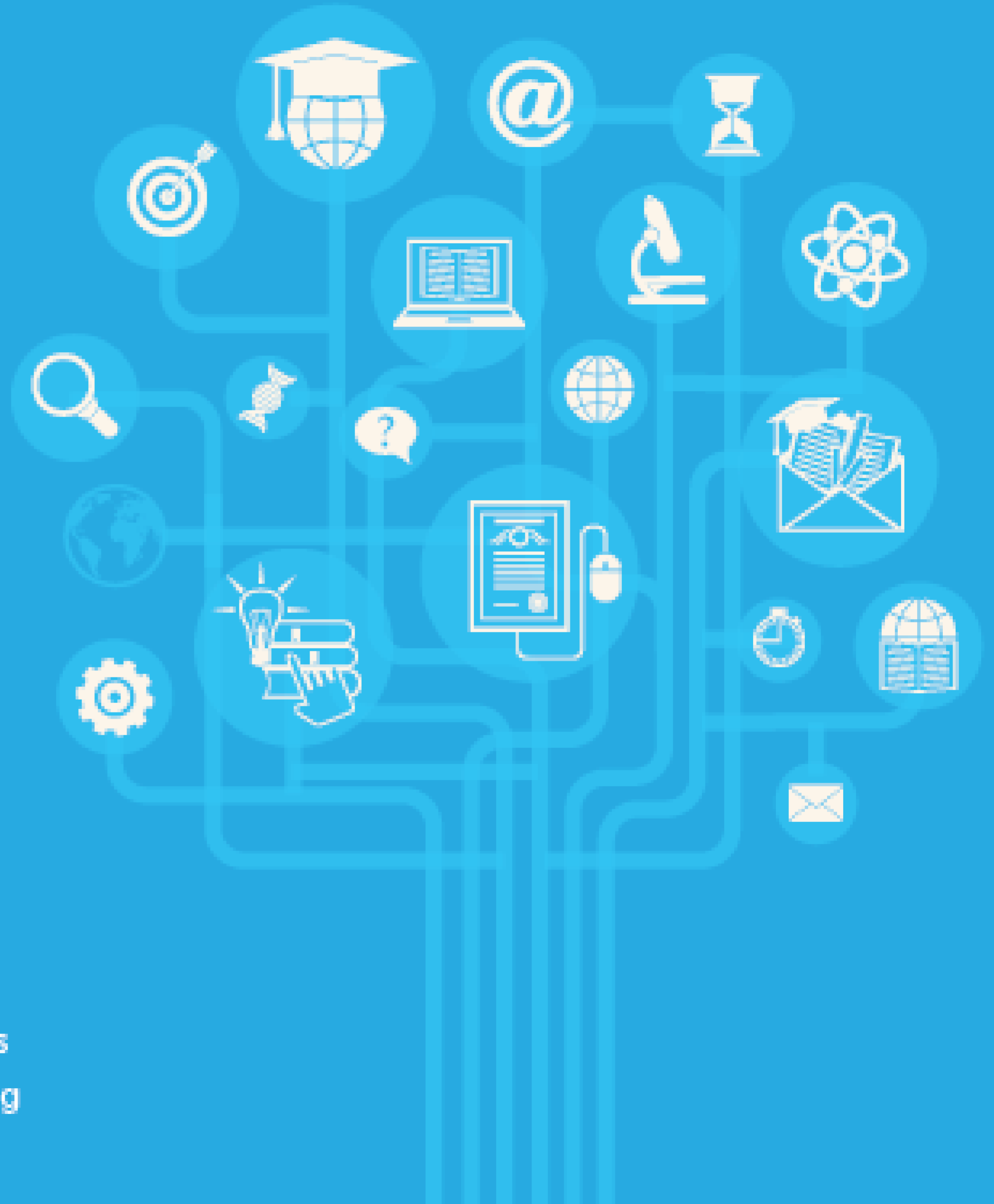
- Dedicated Student Success Manager
- Company Specific Grooming
- 100% Placement Guaranteed
- Only Technical Profiles
- Daily Placement Drives

Our Services

- » Software trainings
- » Software Services
- » Software Product Developments
- » Collage Final Year Projects
- » Digital Marketing

Courses we offer

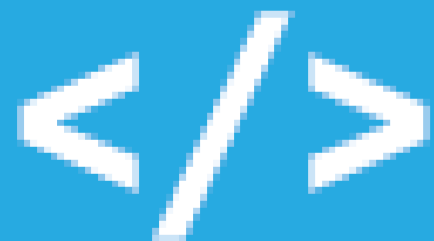
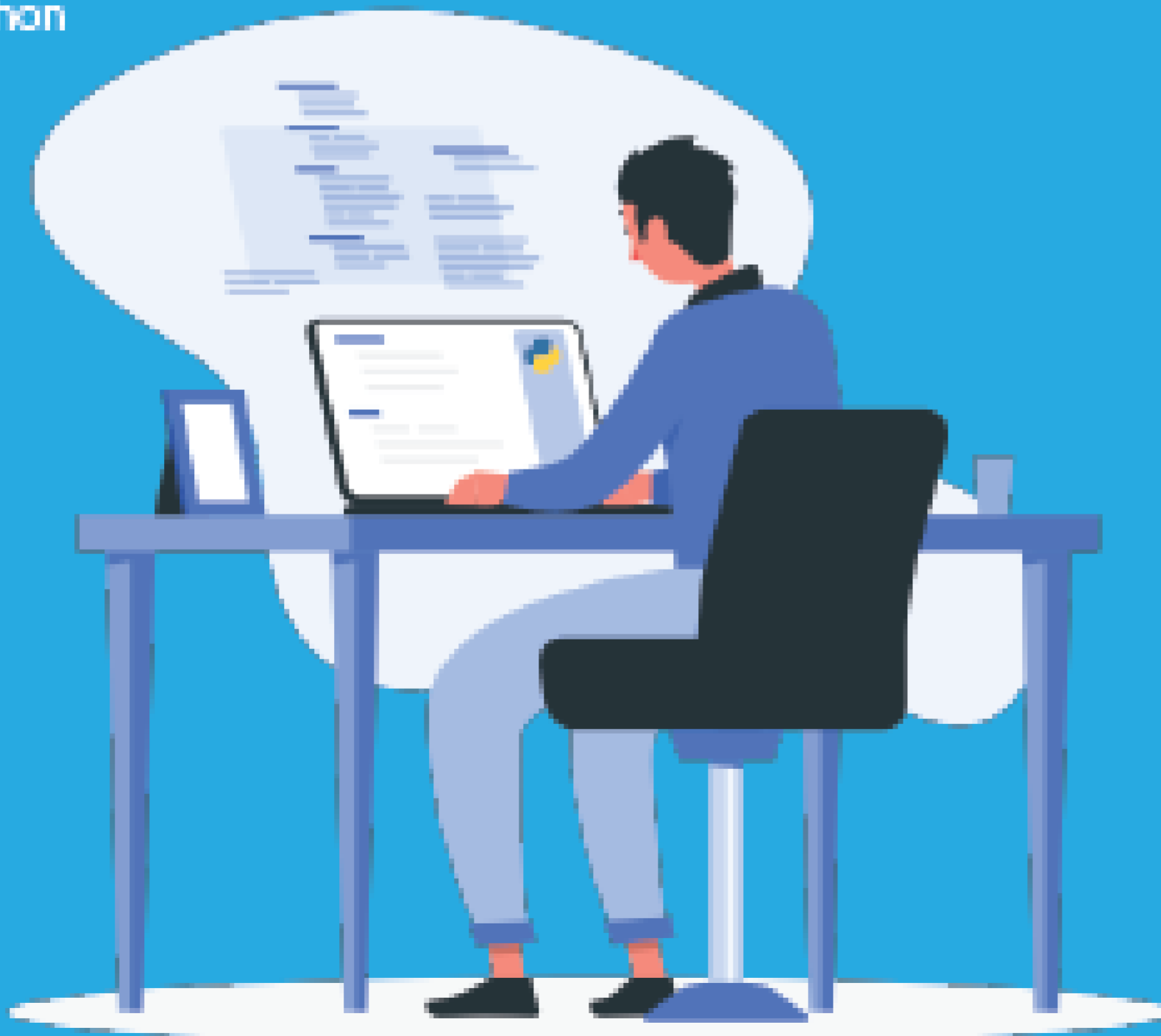
- ☐ Python
- ☐ Angular Js
- ☐ Software Testing
- ☐ PHP - CodeIgnitor
- ☐ PHP - Laravel
- ☐ AI - Machine Learnning
- ☐ Big Data
- ☐ DevOps
- ☐ Node Js
- ☐ .Net
- ☐ Java - SpringBoot
- ☐ Communication Skills
- ☐ Placement Counseling



Python

Basics of Python

- ▶ Control Statements
- ▶ Python-Arrays
- ▶ File handling using python
- ▶ Python-Functions
- ▶ OOPS concepts In Python-Classes and Objects.
- ▶ Exception Handling In Python
- ▶ Python-Modules
- ▶ Databases with python
 - ▶ --Mongodb
 - ▶ --MySQL



Python-Django Developer

- ▶ Introduction to MVC and MVT architecture In django.
- ▶ Django folder structure and flow of control.
- ▶ Basic HTML,CSS,JS
- ▶ Template Rendering.
- ▶ CRUD Operations using Django.
- ▶ Cookies and Session In Python
- ▶ ORM In Python
- ▶ Table Relations In django
- ▶ Django REST Framework.
- ▶ Writing Serializers and REST API Methods.
- ▶ Routing API's
- ▶ Decorators
- ▶ Authentication and Authorization
- ▶ Django User Model Customization.
- ▶ Token generation.
- ▶ Version Control-Git (Bitbucket)
- ▶ Testing Tool- Postman
- ▶ Academic Projects
- ▶ Live Projects.



Angular Js

Course Introduction

- ▶ What Is Angular?
- ▶ Angular vs Angular 2 vs Angular 8
- ▶ CLI Deep Dive & Troubleshooting
- ▶ Project Setup and First App
- ▶ Editing the First App
- ▶ What Is TypeScript?
- ▶ A Basic Project Setup using Bootstrap for Styling

How an Angular App gets Loaded and Started

- ▶ Creating a New Component
- ▶ Understanding the Role of AppModule and Component Declaration
- ▶ Using Custom Components
- ▶ Creating Components with the CLI & Nesting Components
- ▶ Working with Component Templates
- ▶ Working with Component Styles
- ▶ Fully Understanding the Component Selector
- ▶ What Is DataBinding?
- ▶ String Interpolation
- ▶ Property Binding
- ▶ Property Binding vs String Interpolation
- ▶ Event Binding
- ▶ Bindable Properties and Events
- ▶ Passing and Using Data with Event Binding
- ▶ Two-Way-Databinding
- ▶ Combining all Forms of Databinding

- ▶ Understanding Directives
- ▶ Using ngIf to Output Data Conditionally
- ▶ Enhancing ngIf with an Else Condition
- ▶ Styling Elements Dynamically with ngStyle
- ▶ Applying CSS Classes Dynamically with ngClass
- ▶ Outputting Lists with ngFor

- ▶ Understanding Angular Error Messages
- ▶ Debugging Code In the Browser Using Sourcemaps
- ▶ Using Augury to Dive Into Angular Apps

- ▶ Splitting Apps Into Components
- ▶ Property & Event Binding Overview
- ▶ Binding to Custom Properties
- ▶ Binding to Custom Events
- ▶ Understanding View Encapsulation
- ▶ Using Local References In Templates
- ▶ Getting Access to the Template & DOM with @ViewChild
- ▶ Projecting Content Into Components with ng-content
- ▶ Understanding the Component Lifecycle
- ▶ Lifecycle Hooks and Template Access
- ▶ Getting Access to ng-content with @ContentChild
- ▶ Recap and Section Assignment

Angular Js

- ▶ [ngFor, ngClass, ngStyle and ngIf Recap](#)
- ▶ [Creating a Basic Attribute Directive](#)
- ▶ [Using the Renderer to build a Better Attribute Directive](#)
- ▶ [Using HostListener to Listen to Host Events](#)
- ▶ [Using HostBinding to Bind to Host Properties](#)
- ▶ [Binding to Directive Properties](#)
- ▶ [What Happens behind the Scenes on Structural Directives](#)
- ▶ [Building a Structural Directive](#)
- ▶ [Understanding ngSwitch](#)
- ▶ [Why would you Need Services?](#)
- ▶ [Creating a Logging Service](#)
- ▶ [Injecting the Logging Service into Components](#)
- ▶ [Creating a Data Service](#)
- ▶ [Understanding the Hierarchical Injector](#)
- ▶ [How many Instances of Service Should It Be?](#)
- ▶ [Injecting Services into Services](#)
- ▶ [Using Services for Cross-Component Communication](#)
- ▶ [Why do we need a Router?](#)
- ▶ [Setting up and Loading Routes](#)
- ▶ [Navigating with Router Links](#)
- ▶ [Understanding Navigation Paths](#)
- ▶ [Styling Active Router Links](#)
- ▶ [Navigating Programmatically](#)
- ▶ [Passing Parameters to Routes](#)
- ▶ [Fetching Route Parameters](#)
- ▶ [Resolving Dynamic Data with the resolve Guard](#)
- ▶ [Analyzing Angular Observables](#)
- ▶ [Getting Closer to the Core of Observables](#)
- ▶ [Building a Custom Observable](#)
- ▶ [Errors & Completion](#)
- ▶ [Understanding Operators](#)
- ▶ [Subjects](#)
- ▶ [How Authentication Works](#)
- ▶ [Adding the Auth Page](#)
- ▶ [Switching Between Auth Modes](#)
- ▶ [Handling Form Input](#)
- ▶ [Preparing the Backend](#)
- ▶ [Make sure you got Recipes in your backend!](#)
- ▶ [Preparing the Signup Request](#)
- ▶ [Sending the Signup Request](#)
- ▶ [Adding a Loading Spinner & Error Handling Logic](#)
- ▶ [Improving Error Handling](#)
- ▶ [Sending Login Requests](#)
- ▶ [Login Error Handling](#)
- ▶ [Creating & Storing the User Data](#)
- ▶ [Reflecting the Auth State in the UI](#)
- ▶ [Adding the Token to Outgoing Requests](#)
- ▶ [Attaching the Token with an Interceptor](#)
- ▶ [Adding Logout](#)
- ▶ [Adding Auto-Login](#)
- ▶ [Adding Auto-Logout](#)
- ▶ [Adding an Auth Guard](#)
- ▶ [How Does Angular Interact With Backends?](#)
- ▶ [The Anatomy of a Http Request](#)
- ▶ [Backend \(Firebase\) Setup](#)
- ▶ [Sending a POST Request](#)
- ▶ [Getting Data](#)
- ▶ [Using RxJS Operators to Transform Response Data](#)
- ▶ [Using Types with the HttpClient](#)
- ▶ [Outputting Posts](#)
- ▶ [Showing a Loading Indicator](#)
- ▶ [Using a Service for Http Requests](#)
- ▶ [Services & Components Working Together](#)
- ▶ [Sending a DELETE Request](#)
- ▶ [Handling Errors](#)
- ▶ [Using Subjects for Error Handling](#)
- ▶ [Using the catchError Operator](#)
- ▶ [Error Handling & UX](#)
- ▶ [Setting Headers](#)
- ▶ [Adding Query Params](#)
- ▶ [Observing Different Types of Responses](#)
- ▶ [Changing the Response Body Type](#)

Angular Js

- ▶ [Introducing Interceptors](#)
- ▶ [Manipulating Request Objects](#)
- ▶ [Response Interceptors](#)
- ▶ [Multiple Interceptors](#)

- ▶ [Template-Driven \(TD\)](#)
- ▶ [TD: Creating the Form and Registering the Controls](#)
- ▶ [TD: Submitting and Using the Form](#)
- ▶ [TD: Understanding Form State](#)
- ▶ [TD: Accessing the Form with @ViewChild](#)
- ▶ [TD: Adding Validation to check User Input](#)
- ▶ [Built-in Validators & Using HTML5 Validation](#)
- ▶ [TD: Using the Form State](#)
- ▶ [TD: Outputting Validation Error Messages](#)
- ▶ [TD: Set Default Values with ngModel Property Binding](#)
- ▶ [TD: Using ngModel with Two-Way-Binding](#)
- ▶ [TD: Grouping Form Controls](#)
- ▶ [TD: Handling Radio Buttons](#)
- ▶ [TD: Setting and Patching Form Values](#)
- ▶ [TD: Using Form Data](#)



Full Stack Developer

- ▶ HTML ▶ CSS ▶ JavaScript ▶ Bootstrap ▶ Typescript/ES6 ▶ Angular 76
- ▶ RxJS ▶ Passport ▶ Webpack ▶ REST API ▶ JSPM ▶ Gulp ▶ NodeJS
- ▶ Express/Loopback ▶ MongoDB

Automation Tester

- ▶ What Is Automation testing
- ▶ Selenium with Java
- ▶ Understand Selenium IDE
- ▶ Understand web elements
- ▶ Creating first script using record and playback
- ▶ Installation of Inspector Tools and its Uses.
- ▶ Generating Scripts using different WebElements
- ▶ Handling Wait Commands
- ▶ Handling Validations Commands
- ▶ Navigation In selenium
- ▶ Cross Browsing using selenium
- ▶ Understand JUnit/TestNG framework
- ▶ Understand Extent Reports
- ▶ Handling multiple windows, pop-ups, alerts
- ▶ Develop Various frameworks
- ▶ Mobile App automation using Aplum
- ▶ Applum Architecture
- ▶ Applum on Android AndIOS
- ▶ Applum Server - Command Line, Application, Exe
- ▶ Client Libraries Introduction - Java, Python, Ruby
- ▶ Android Platform
- ▶ JDK (Java Development Kit) and Eclipse Configuration
- ▶ Android SDK Installation
- ▶ ADB Commands, Android Settings, Developer Settings, Applum Inspector, Trash actions
- ▶ IOS Platform
- ▶ Xcode tool for IOS
- ▶ API Automation using Jmeter
- ▶ What Is JMeter?
- ▶ Running JMeter
- ▶ Thread Group
- ▶ Controllers
- ▶ Samplers
- ▶ Logic Controllers



Power BI

- ▶ Download and Install BI Desktop
- ▶ Add, Rename, Duplicate, and Delete Pages
- ▶ Connect to SQL Server
- ▶ Connect to Multiple Excel Sheets
- ▶ Load Data from Multiple Data Sources
- ▶ Remove Unwanted Columns from Tables
- ▶ Power BI Transformations
- ▶ Blns
- ▶ Change the Data type of a Column
- ▶ Combine Multiple Tables
- ▶ Clusters
- ▶ Enter data or Copy & Paste data from Clipboard
- ▶ Format Dates
- ▶ Groups
- ▶ Hierarchies
- ▶ Joins
- ▶ Power BI Charts
- ▶ Area Chart
- ▶ Bar Chart
- ▶ Card
- ▶ Clustered Bar Chart
- ▶ Power BI Filters
- ▶ Slicer
- ▶ Basic Filters

- ▶ Advanced Filters
- ▶ Top N Filters
- ▶ Power BI Tutorial on Calculated Fields
- ▶ Calculated Columns
- ▶ Power BI Tutorial on Dashboards
- ▶ Register to Pro Service
- ▶ Dashboard Introduction
- ▶ Connect Desktop with BI Service or Pro
- ▶ Power BI tutorial on Reports and Datasets1. Creating a Report
- ▶ Creating a Report using Excel Data
- ▶ Upload Excel Files to Dashboard
- ▶ Upload Workbook
- ▶ Sharing Workspace

Software Testing

- ▶ Software Development Lifecycle
- ▶ What Is Software Testing
- ▶ Software Testing Lifecycle
- ▶ Test Estimation Techniques
- ▶ Test Strategy
- ▶ Test Planning
- ▶ How to create a test
- ▶ Various types of testing - White and Black Box plan
- ▶ Unit Testing

- ▶ Software Testing Lifecycle
- ▶ Requirement Testing
- ▶ Functional Testing
- ▶ UI Testing
- ▶ Database Testing
- ▶ Regression Testing
- ▶ User Acceptance Testing
- ▶ Test Design Techniques
- ▶ Exploratory testing Production Testing
- ▶ Smoke Testing
- ▶ Sanity Testing
- ▶ Testing Metrics
- ▶ Automation Testing - Fundamentals
- ▶ Behavior Driven Development
- ▶ Testing In Agile World Test Management
- ▶ Tools - Introduction

Agile Process

- ▶ Agile Primer ▶ Agile Flavors
- ▶ Agile Scrum ▶ Scrum Roles
- ▶ Scrum Ceremonies ▶ Backlog Grooming
- ▶ Estimation - Planning Poker ▶ Sprint Planning
- ▶ Daily Standup ▶ Sprint Review
- ▶ Sprint Retrospection ▶ Team Velocity
- ▶ Burn Down and other Agile Metrics
- ▶ Agile Tools ▶ Live Project

PHP

CodeIgniter

- ▶ Models, views, controllers
- ▶ Installation
- ▶ Directory Structure
- ▶ URL Routing
- ▶ Controller
- ▶ View
- ▶ Passing Data In View
- ▶ Print Variable
- ▶ Control Statement
- ▶ Build Master Layout
- ▶ Include a File
- ▶ Form Handling
- ▶ Connecting Database
- ▶ MODEL
- ▶ Error Handling
- ▶ Validation Preserving the Data
- ▶ File Uploading
- ▶ Session
- ▶ Removing Public From URL Simple Crud Operation (CREATE,READ,UPDATE,DELETE,SEARCH)

Laravel

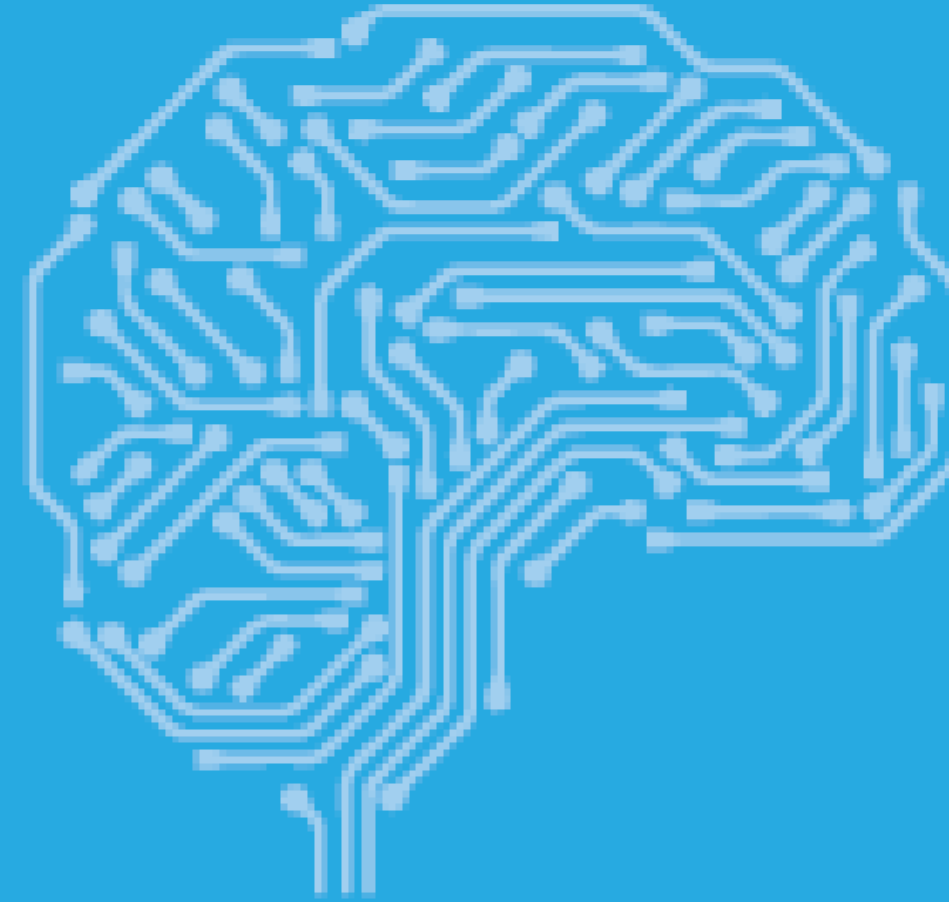
- ▶ Introduction of Laravel
- ▶ Installation
- ▶ Directory Structure
- ▶ URL Routing
- ▶ Controller
- ▶ View
- ▶ Passing Data In View
- ▶ Print Variable
- ▶ Control Statement
- ▶ Build Master Layout
- ▶ Include a File
- ▶ Form Handling
- ▶ Connecting Database
- ▶ MODEL
- ▶ Error Handling
- ▶ Validation Preserving the Data
- ▶ File Uploading
- ▶ Session
- ▶ Removing Public From URL Simple Crud Operation (CREATE,READ,UPDATE,DELETE,SEARCH)



AI - Machine Learning

AI & ML Syllabus

- ▶ Introduction to AI
- ▶ Data Science with Python
- ▶ Data Science Overview
- ▶ Data Analytics Overview
- ▶ Statistical Analysis and Business Applications
- ▶ Python Environment Setup and Essentials
- ▶ Mathematical Computing with Python (NumPy)
- ▶ Scientific computing with Python (SciPy)
- ▶ Data Manipulation with Pandas
- ▶ Machine Learning with Scikit-Learn
- ▶ Natural Language Processing with Scikit Learn
- ▶ Data Visualization In Python using matplotlib
- ▶ Python Integration with Hadoop MapReduce and Spark
- ▶ Practice Projects
- ▶ Machine learning
- ▶ ML-Algorithm (Classification)
- ▶ Decision Tree
- ▶ Random Forest



- ▶ Logistic Regression
- ▶ Naive Bayes
- ▶ Support Vector Machine
- ▶ ML-Algorithm (Regression)
- ▶ Basics Of Regression
- ▶ Linear Regression
- ▶ Data Visualization With Python
- ▶ Introduction to Visualization Tools
- ▶ Introduction to Data Visualization
- ▶ Introduction to Matplotlib
- ▶ Working on Dataset
- ▶ Basic Visualization Tools
- ▶ Area Plots
- ▶ Histograms
- ▶ Bar Charts
- ▶ Pie Charts
- ▶ Box Plot, Scatter Plots
- ▶ Projects and Practkals
- ▶ Deep Learning with Keras and Tensorflow
- ▶ Projects and Practkals

Big Data

Big Data Introduction

- ▶ Big data: definition and taxonomy
- ▶ Big data value for the enterprise
- ▶ Setting up the demo environment
- ▶ First steps with the Hadoop "ecosystem" Exercises

The Hadoop ecosystem

- ▶ Introduction to Hadoop
- ▶ Hadoop components: MapReduce/Pig/Hive/HBase
- ▶ Loading data into Hadoop
- ▶ Handling files in Hadoop
- ▶ Getting data from Hadoop Exercises

Querying big data with Hive

- ▶ Introduction to the SQL Language
- ▶ From SQL to HiveQL Exercises

Querying big data with Hive

- ▶ Introduction to HIVE e HIVEQL
- ▶ Using Hive to query Hadoop files Exercises

Big data & Machine learning

- ▶ Quick Intro to Machine learning
- ▶ Big Data & Machine Learning
- ▶ Machine learning tools
- ▶ Spark & SparkML

- ▶ H2O
- ▶ Azure ML Exercises

Big data & Machine learning

- ▶ Big Data & Machine Learning (continued)
- ▶ Next steps in the big data world Exercises
- ▶ A case study

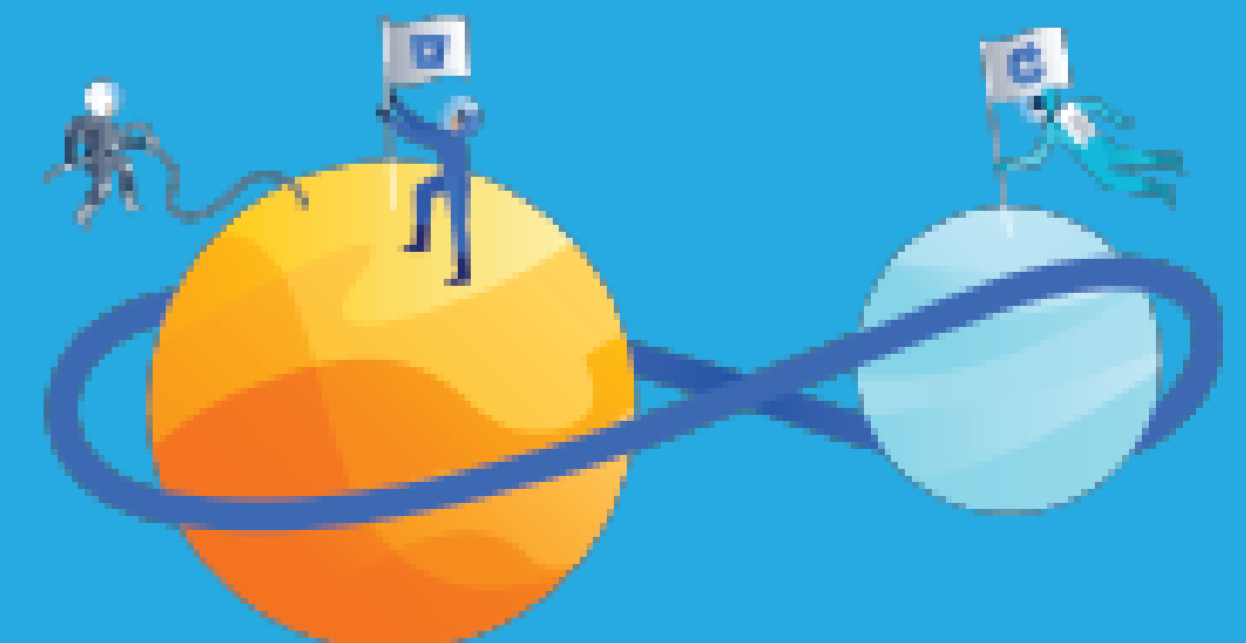


DevOps

Why DevOps? Preview

- ▶ What Is DevOps?
- ▶ DevOps Market Trends
- ▶ DevOps Engineer Skills
- ▶ DevOps Delivery Pipeline Preview
- ▶ DevOps Ecosystem
- ▶ What Is version control Preview
- ▶ What Is Git
- ▶ Why Git for your organization Preview
- ▶ Install Git
- ▶ Common commands In Git
- ▶ Working with Remote Repositories
- ▶ GIT Installation, Version Control, Working with remote repository
- ▶ Jenkins Management Preview
- ▶ Adding a slave node to Jenkins
- ▶ Building Delivery Pipeline
- ▶ Pipeline as a Code

- ▶ Introduction to Selenium
- ▶ Why Selenium?
- ▶ Selenium - WebDriver Preview
- ▶ Creating Test Cases In Selenium WebDriver (Waits)
- ▶ What and why X-Path
- ▶ Handling different controls on Webpage
- ▶ Framework In Selenium
- ▶ Selenium Integration with Jenkins
- ▶ Installing Selenium
- ▶ Creating Test Cases In Selenium WebDriver
- ▶ Integrating Selenium with Jenkins
- ▶ Shipping Transportation Challenges
- ▶ Introducing Docker
- ▶ Understanding Images and containers
- ▶ Running Hello World In Docker
- ▶ Introduction to Container Preview
- ▶ Container Life Cycle
- ▶ Sharing and Copying
- ▶ Base Image



DevOps

- ▶ Docker File
- ▶ Working with containers
- ▶ Publishing Image on Docker Hub
- ▶ Create and Implement docker Images and containers
- ▶ Introduction to Docker Ecosystem
- ▶ Docker Compose
- ▶ Docker Swarm Preview
- ▶ Managing Containers
- ▶ Running Containers
- ▶ Introduction to Docker Networking
- ▶ Network Types
- ▶ Docker Container Networking
- ▶ Use Docker Compose to create a WordPress site
- ▶ Start Containers on a Cluster with Docker Swarm
- ▶ Deploy a multi-tier application over a cluster
- ▶ Scale an application
- ▶ Introduction to Puppet
- ▶ Puppet Installation
- ▶ Puppet Configuration
- ▶ Puppet Master and Agent Setup
- ▶ Puppet Module Preview
- ▶ Node Classification
- ▶ Puppet Environment
- ▶ Puppet Classes

DevOps



Node Js

Introduction

- ▶ What Is Node JS?
- ▶ Advantages of Node JS
- ▶ Traditional Web Server Model
- ▶ Node.js Process Model

- ▶ Install Node.js on Windows
- ▶ Installing in mac os
- ▶ Working In REPL
- ▶ Node JS Console

- ▶ Functions
- ▶ Buffer
- ▶ Module
- ▶ Module Types
- ▶ Core Modules
- ▶ Local Modules

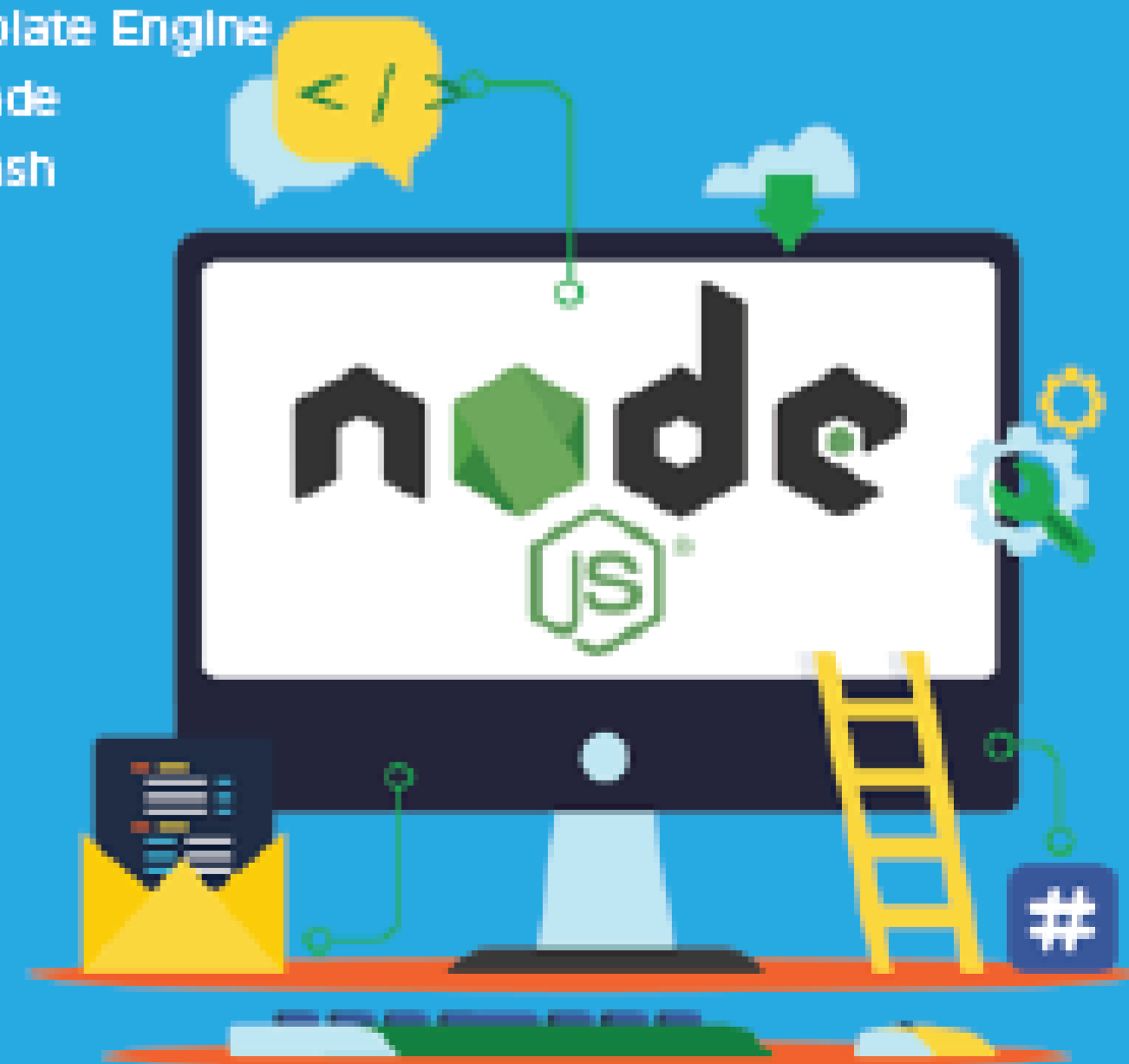
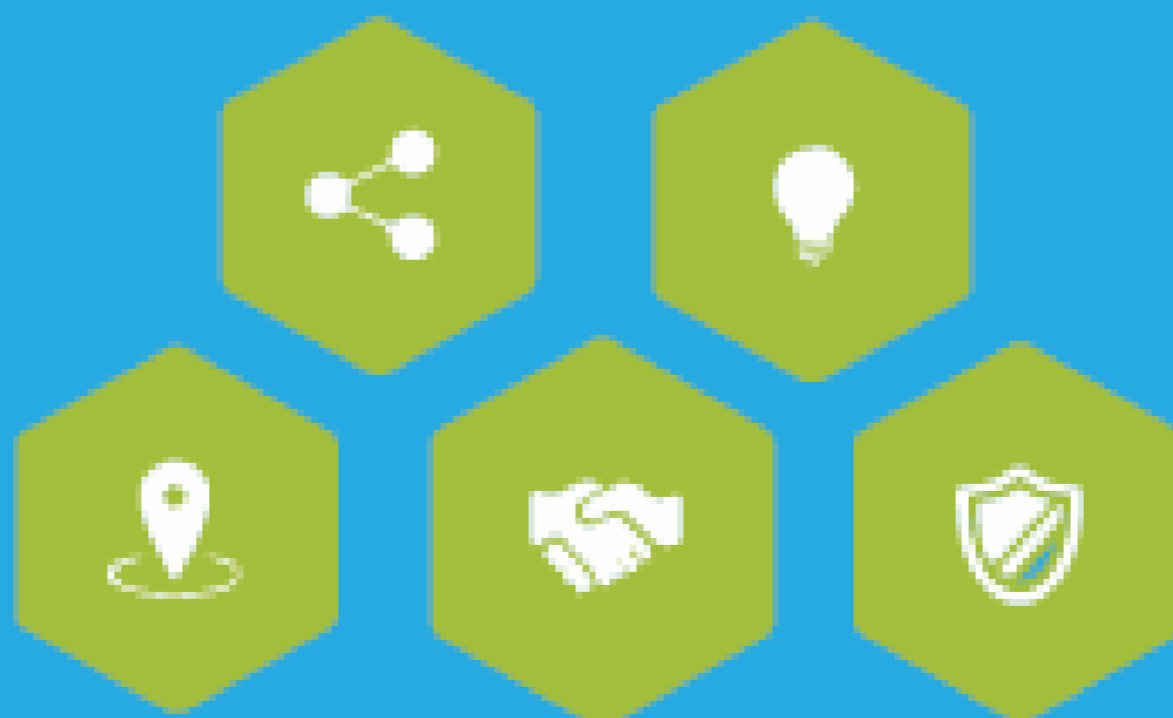
- ▶ What Is NPM
- ▶ Installing Packages Locally
- ▶ Adding dependency in package.json
- ▶ Installing packages globally
- ▶ Updating packages

- ▶ Creating web server
- ▶ Handling http requests
- ▶ Sending requests

- ▶ Fs.readFile
- ▶ Writing a File
- ▶ Writing a file asynchronously
- ▶ Opening a file
- ▶ Deleting a file
- ▶ Other IO Operations

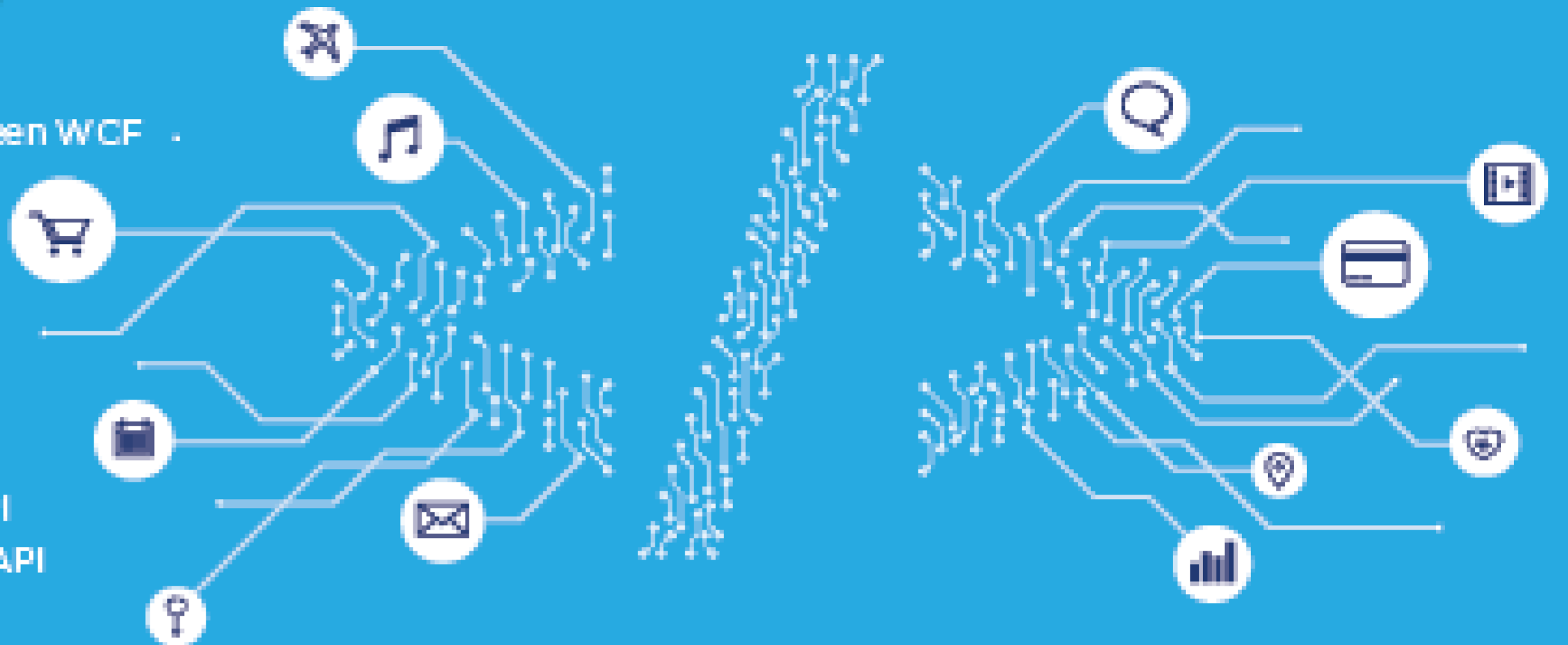
- ▶ Core Node JS debugger
- ▶ Debugging with Visual Studio

- ▶ EventEmitter class
- ▶ Returning event emitter
- ▶ Inhering events
- ▶ Configuring routes
- ▶ Working with express
- ▶ Serving static files
- ▶ Working with middle ware
- ▶ Connection string
- ▶ Configuring
- ▶ Working with select command
- ▶ Updating records
- ▶ Deleting records
- ▶ Why Template Engine
- ▶ What Is Jade
- ▶ What Is vash



.Net Developer

- ▶ What Is ASP.NET Web API and difference between WCF .
- ▶ Creating a Web API Project
- ▶ Http Get Put Post Delete
- ▶ Using Postman for Web API
- ▶ ASP.NET Web API and SQL Server
- ▶ ASP.NET Web API Content Negotiation
- ▶ ASP.NET Web API MediaTypeFormatter
- ▶ Implementing post method In ASP.NET Web API
- ▶ Implementing Delete method In ASP.NET Web API
- ▶ Implementing Put method In ASP.NET Web API
- ▶ Custom method names In ASP.NET Web API
- ▶ ASP.NET Web API query string parameters
- ▶ FromBody and FromUri In Web API
- ▶ Calling Web API from Client application
- ▶ Call ASP.NET Web API from JQuery
- ▶ Consuming Web API service In using JQuery ajax
- ▶ Cross-origin resource sharing ASP.NET Web API
- ▶ Enable SSL In Visual Studio Development Server
- ▶ ASP.NET Web API enable HTTPS
- ▶ Configure Dependency Injection with Web API
- ▶ Implementing basic authentication In ASP.NET Web API
- ▶ Call web api service with basic authentication using jquery ajax
- ▶ ASP.NET Web API token authentication
- ▶ ASP.NET Web API user registration
- ▶ Using ASP.NET Identity with Web API
- ▶ Using fiddler to test ASP.NET Web API token based authenticatio



Java Developer

- ▶ Introduction to Java Programming
- ▶ Object-Oriented programming with Java classes and objects
- ▶ Inheritance, Overloading and Polymorphism
- ▶ Exception handling with try-throw-catch-finally constructs
- ▶ The Object class
- ▶ Working with classes
- ▶ Packages
- ▶ Applets - For browser based applications
- ▶ Basics of AWT and Swing - For Desktop Applications
- ▶ Threads
- ▶ The I/O Package
- ▶ Basics Concepts of Networking
- ▶ Database connectivity with JDBC

Digital Marketing

Basic Course

- ▶ Principles of Digital Marketing
- ▶ Digital Marketing Fundamentals
- ▶ Inbound vs Outbound Marketing
- ▶ Search Engine Optimization
- ▶ Social Media Optimization
- ▶ Website Planning and Structure
- ▶ Website Auditing and reporting
- ▶ Search Engine Marketing

Advanced Digital Marketing Course

- ▶ Website and Its Fundamentals
- ▶ Website Development Using WordPress
- ▶ Seo On page and Off Page
- ▶ Search Engine Marketing
- ▶ Social Media Marketing
- ▶ Email Marketing
- ▶ Youtube Marketing
- ▶ PPC Campaigns
- ▶ Google AdWords

Advanced Complete SEO Training

- ▶ Work In Our Live Projects
- ▶ Website Analysis & Competitor
- ▶ Seo Onpage and Off Page
- ▶ Google Web Master Tools, Google Analytics
- ▶ Content Marketing Strategies
- ▶ Working of Robots.txt, Do-Follow Links
- Google / Yahoo / Bing Algorithms



Placement Partners



future¹¹¹ mug

Hiring Companies

CYDEZ Technologies

Kruxsoft Solutions

Techware Solutions

Bency Infotech

LVF Technologies

Emvigo Technologies

CVS Info Solutions

Smartipz Solutions



LEARN MORE . EARN HIGH

ASPIRE

IT ACADEMY

Aspire IT Academy

Innerspace, SRM Road, Near Nirmala Shishu Bavan,
Kaloor, Ernakulam, Kerala 682018

Ph: 9947 144 333 | 9947 244 333